

**“ Good night, sleep tight
Don't let the bed bugs bite.”**



**You can try reciting it, but it's
wiser to ask for an expert's help.**



**New BIOPREN® 6 EC
containing S-methoprene (IGR)**

**with triple activity able to control pests
resistant to synthetic pyrethroid insecticides:**

- **natural pyrethrum** flushes out and knocks down hidden insects
- its **S-methoprene** insect growth regulator active ingredient disrupts the life cycle of insects by preventing them developing into adults
- **PBO** enhances the efficacy



**ACTIVES GIVE HIGHLY EFFECTIVE AND
SAFE USE EVEN ON MATTRESSES**

*Use insecticides safely. Always read the label
and product information before use.
BIOPREN® is a registered trademark of BÁBOLNA BIO.*

BIOPREN® 6 EC

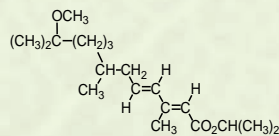


Due to its up-to-date composition, Biopren® 6 EC bedbug and flea killer concentrate not only flushes out and knocks down hiding insects, but its S-methoprene insect growth regulator active ingredient also disrupts the life cycle of insects by preventing them to develop into adults. The product is able to control even those pests that are resistant to synthetic pyrethroid insecticides.

ADVANTAGES:

- Up-to-date, novel composition
- Excellent flushing out and knocking-down effect
- S-methoprene IGR disrupts the life cycle of insects
- Control pests that are resistant to synthetic pyrethroid insects
- Long-term residuality

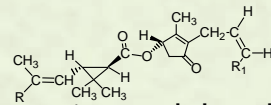
ACTIVE INGREDIENTS:



w/w 6,74 % (60 g/l) S-methoprene

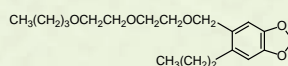


Acts as an insect juvenile hormone analogue that inhibits insect maturation processes. The mature stages lose their capacity to reproduce, thus the cycle of reproduction stops and infestations diminish.



w/w 4,81 % (43 g/l) pyrethrins

Binds to sodium channels, prolonging their opening and thereby causing knockdown and death.





10,17 % (91 g/l) piperonil butoxide

Inhibits mixed function oxidases (MFO) of the insect so that its natural detoxification system is blocked and the efficacy of applied insecticides is increased.

**PRODUCT FOR
PROFESSIONAL USE**

**EXPIRATION PERIOD:
2 years**

PACKING:

KS-22234	 12 x 500 ml dosing bottle	 44 cartons
KS-22233	 12 x 1 L	 32 cartons

PHYSICAL PROPERTIES:

APPEARANCE: light yellowish liquid
ODOUR: petroleum like
SOLUBILITY: soluble in organic solvents,
dispersible in water
RELATIVE DENSITY: 0,84 g/cm³

STABILITY:

If stored in original unopened packaging in a dry and cool place away from radiant heat and direct sunlight at maximum 35 °C, the product can be used for 2 years from manufacture.



BIOPREN® 6 EC



DIRECTIONS FOR USE:

Biopren® 6 EC bedbug and flea killer concentrate works by contact action, so treat infested areas thoroughly, paying particular attention to the insects' hiding places and movement areas. Spray directly onto surfaces, cracks, crevices and into any possible areas where insects may be hiding. Apply the working solution to the surfaces evenly.

Shake the product in the container before dissolving the concentrate. Once the concentrate is filled, close the container immediately. Fill the sprayer with water to half of its volume, then measure the required quantity of **Biopren® 6 EC bedbug and flea killer concentrate** as given below and add to the sprayer. Fill the sprayer up to volume and thoroughly mix the solution. **Keep the prepared working solution closed and use it up within 24 hours.**

Flea control: dissolve 20 ml of **Biopren® 6 EC bedbug and flea killer concentrate** in 5 litres of water.

Apply the working solution to places where flea larvae develop as well as to the whereabouts of adult fleas:

- **Treatment of living premises:** Spray mainly the floor, carpets, wall-to-wall carpets, under-furniture areas, walls up to a height of 1 meter paying special attention to cracks and crevices, upholstered furniture as well as preferred resting areas of dogs and cats kept in the premises.
- **Treatment of premises for keeping animals (doghouses):** Treat the floor and side-walls up to a height of approx. 1 meter paying special attention to cracks and crevices.

Do not wash the treated surfaces for at least one week after treatment. If the spray is washed off, repeat treatment.

Do not apply the product directly to household animals and pets. After drying, the spray may leave a whitish spot on the treated surfaces. It is recommended to thoroughly aerate premises after treatment.

On an average, the **5 l** of working solution is enough to treat **100 m²** surface.

Residual efficacy: At the recommended dose, the application will result in up to **6-9 months** control.



BIOPREN® 6 EC



Bedbug control: dissolve 50 ml of **Biopren® 6 EC bedbug and flea killer concentrate** in 5 litres of water. Preferably apply the spray directly to the whereabouts of the insects. Treat the bed, bed-frames, mattress holder grids, headboards and behind headboards, hems of mattresses, bedside cupboards, bedside furniture, tables, cupboards and its drawers, chairs, sofas, especially upholstery, tassels and seams. Pay special attention to treatment of cracks and crevices as even the smallest crack can be a refuge for pests. Also treat floor and wall cracks and crevices, wallpaper edges and defects as well as joints of furniture. Remember to apply the product on back side of book-shelves and other furniture/fixtures especially frames of pictures, wall mirrors, edges of wall-to-wall carpets, floor joints and edges, curtains, strip curtains and their plies, cornices as well as suspended ceiling and its joints. Also treat around wall-sockets, switches, smoke detectors.

As a result of the good flushing out action of the product, the previously hiding bedbugs may come out in large numbers during treatment. In order to prevent their dispersal and to destroy them, spray these insects directly with the working solution made out of **Biopren® 6 EC bedbug and flea killer concentrate**.

In case of heavy infestation, simultaneous use of a residual product may be necessary to improve efficacy; such residual product may be added to the working solution made out of Biopren® 6 EC.

Do not apply product directly onto electrical devices.

As a result of the good flushing out action of the product, the previously hiding bedbugs may come out in large numbers during treatment. In order to prevent their dispersal and to destroy them, spray these insects directly with the working solution made out of **Biopren® 6 EC bedbug and flea killer concentrate**.

Do not treat sheets, pillows, duvets and blankets, however, it is recommended to wash these in water of at least 60 °C (if permitted in the directions for use of the textiles) at the same time as treatment is performed.

On an average, the **5 l** of working solution is enough to treat **100 m²** surface.

Residual efficacy: For maximum effect, repeat treatment within 2 weeks. In case of heavy infestation and poor hygiene conditions a third treatment may also become necessary. Repeating the treatment is especially important in such problematic places, where the identification of the initial level of infestation is not possible, the premises are overcrowded or the tenants often change, hence the increased risk of reintroduction of bedbugs. Proper compliance with the above directions for use and careful treatment will result in several months' efficacy (insect-free conditions) over the treated area.

