

# BIOPREN® BED BUG AND FLEA KILLER SPRAY

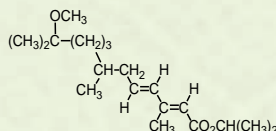


Ready-to-use spray for control of biting insects such as bed bugs, fleas and other crawling insects.

## ADVANTAGES:

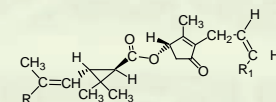
- Novel, up-to-date, ready to use product for amateur use.
- Excellent flushing out and knocking-down effect.
- S-Methoprene disrupts the life cycle of insects.
- Can be applied on mattresses.
- Specifically designed against bedbugs and fleas.
- Controls pests that are resistant to synthetic pyrethroid insects.
- Provide effective protection against re-infection.

## ACTIVE INGREDIENTS:



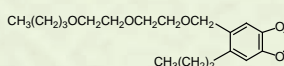
**w/w 0,28 % (2,24 g/l) S-methoprene**

Acts as an insect juvenile hormone analogue that inhibits insect maturation processes. The mature stages lose their capacity to reproduce, thus the cycle of reproduction stops and infestations diminish.



**w/w 0,18 % (1,50 g/l) pyrethrins**

Binds to sodium channels, prolonging their opening and thereby causing knockdown and death.



**0,36 % (2,90 g/l) piperonil butoxide**

Inhibits mixed function oxidases (MFO) of the insect so that its natural detoxification system is blocked and the efficacy of applied insecticides is increased.

## PHYSICAL PROPERTIES:

**APPEARANCE:** yellowish transparent liquid  
**ODOUR:** characteristics, alcoholic  
**SOLUBILITY:** soluble  
**RELATIVE DENSITY:** 0.924 g/cm<sup>3</sup>

## STABILITY:

If stored in a cool, dry, well-ventilated room, maintain upright posture in original packaging, the product can be used for 2 years from manufacture.

**PRODUCT FOR PROFESSIONAL USE**

**EXPIRATION PERIOD:**  
2 years

**PACKING:**

KS-21630



12 x 500 ml  
trigger spray



32 cartons



# BIOPREN® BED BUG AND FLEA KILLER SPRAY

## DIRECTIONS FOR USE:

BIOPREN® bed bug and flea killer spray should be used as a surface spray. Use at any time of year when pests are seen.

Before first use break off the safety cover from the nozzle. Shake well before use, then release and lower the safety lock behind the trigger by squeezing with finger and thumb. Spray directly on to surfaces, and into cracks, crevices and other places where insects may be hiding. Wet the surface thoroughly. Avoid direct application to electrical appliances, fittings and power points. After use return the safety lock into position.



## Bed bug control

For the control of bedbugs, treat the bed structures and surrounding areas (e.g. headboards, bed-bases, bed-legs, bedside furniture, skirting boards, wall-floor junctions, and wall surfaces adjacent to the beds) thoroughly. Pay particular attention to all crack and crevices where pests may be hiding. In addition, make sure that all bedbug movement areas and access routes onto the bed are treated; mattresses, bed-linen, duvets, blankets and pillows should not be treated.

- Residual efficacy: 2 weeks
- Usage: 15 mL (24-26 trigger pulls)/ m<sup>2</sup>

For maximum efficacy, repeat the treatment after 2 weeks. A further treatment may be necessary where bed bugs remain, e.g. in cases of heavy infestation or poor hygiene. As a result of the excellent 'flushing' properties of the product, bed bugs may emerge from hiding places in numbers during treatment. To avoid dispersion, treat any exposed insects directly. When used as recommended BIOPREN® bed bug and flea killer spray will eliminate existing infestations and provide effective protection against re-infestation. Treated areas should be monitored closely for signs of re-infestation.

## Flea control

For the control of fleas, treat infested areas thoroughly, paying particular attention to areas favoured by animals, especially around beds.

- Residual efficacy: 1 month
- Usage: 5 mL (8-9 trigger pulls)/ m<sup>2</sup>

Do not apply BIOPREN® bed bug and flea killer spray directly to pets or plants. It is unlikely that BIOPREN® BFS will damage surfaces but the product should be tested on a small inconspicuous area first to check compatibility. This is particularly important when treating carpets and soft furnishings. Children and pets may be allowed to use the treated area normally after the spray has dried.

BIOPREN® bed bug and flea killer spray will have a quick killing effect on adult insects. The main activity will be apparent after a longer period of time (3-5 weeks for fleas and early stage bedbugs) as the S-methoprene active ingredient disrupts the insect life cycle. BIOPREN® bed bug and flea killer spray will quickly kill any bedbugs that are sprayed directly, while any that escape direct treatment will be affected over the following weeks as the S-methoprene active ingredient interrupts their development. Efficacy will be reduced if used on highly porous surfaces such as brick, bare plaster or concrete etc. The product should be re-applied as recommended following the washing of previously treated surfaces.

