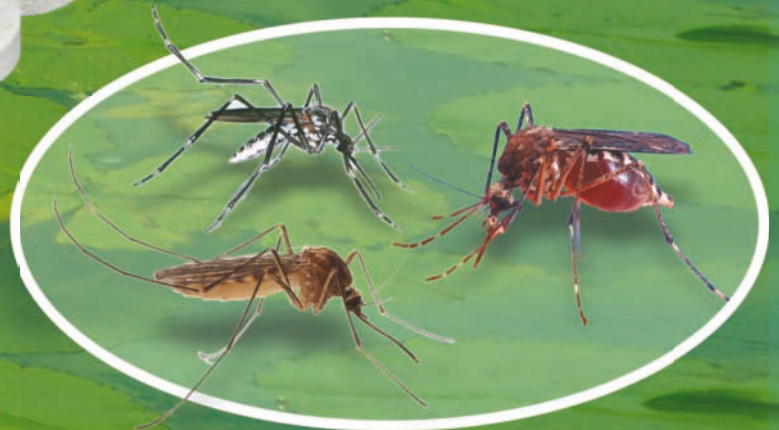


BIOPREN®

MOSQUITO LARVICIDE

TABLET

based on S-methoprene
insect growth
regulator



BIOPREN®

MOSQUITO LARVICIDE TABLET



BIOPREN® Mosquito Tablet is an insecticide-larvicide against larval forms of mosquitos that contains an insect growth regulator, S-Methoprene. The product affects the larvae of various mosquito species (*Aedes aegypti*, *Aedes albopictus*, *Culex pipiens*). Due to the delayed action of the active substance, most individuals are destroyed during the pupal stage. The product has no effect on adult mosquitoes.







ADVANTAGES:

- Very active at low doses
- Has a residual effect.
- When in contact with water, the active substance is released continuously at a slow rate, thus inhibiting the emergence of adult mosquitoes out of the treated water.
- Contains a bitter substance, Denatonium benzoate, which reduces the possibility of accidental ingestion by children or unaware people.
- Ideal for the treatment of manholes, drains, basement windows and in general, areas with stagnant water.

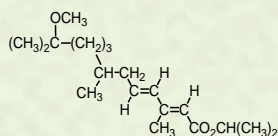
**PRODUCT FOR
PROFESSIONAL AND
AMATEUR USE**

**EXPIRATION PERIOD:
2 years**

PACKING:

KS-21894 2 g tablet	 6 x 1 kg	 30 cartons
KS-21895 2 g tablet	 5 kg	 60 buckets
KS-21899 0.5 g tablet	 6 x 1 kg	 30 cartons

ACTIVE INGREDIENT:



w/w 0.50 % (5.00 g/kg) S-methoprene

Acts as an insect juvenile hormone analogue that inhibits insect maturation processes. The mature stages lose their capacity to reproduce, thus the cycle of reproduction stops and infestations diminish.



PHYSICAL PROPERTIES:

APPEARANCE:

disc shaped hard, offwhite tablet

ODOUR:

characteristic

SOLUBILITY:

dispersible in water

STABILITY:

If stored in original, unopened packaging in a dry and cool place away from sunlight, can be used for 2 years from manufacture.

Use insecticides safely. Always read the label and product information before use.



BIOPREN®

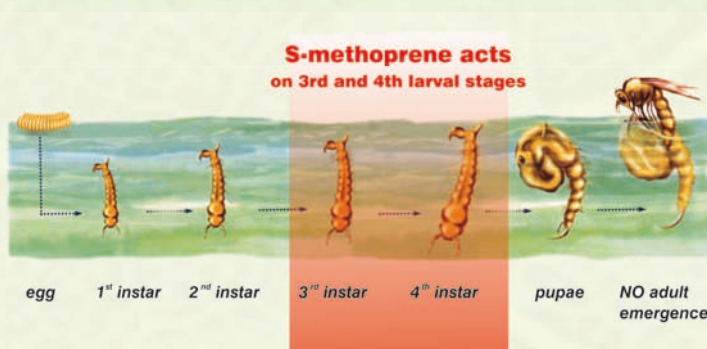
MOSQUITO LARVICIDE TABLET



S-methoprene based mosquito larvicides disrupt the development of mosquito larvae in ponds, puddles, swamps, and other natural or artificial bodies of water. The environment-friendly biorational active ingredient S-methoprene break the mosquito's life cycle preventing the emergence of biting and breeding adults. S-methoprene is active against a range of species including Anopheles, Culex, Culiseta, Coquilletidia spp. as well as those of the floodwater complex, Aedes and Psorophora spp. Larvae treated with S-methoprene can continue to develop into the pupal stage but die prior to emergence.

S-methoprene based mosquito larvicides are enviro-friendly formulations. S-methoprene does not pose unreasonable risks to wildlife or the environment. Its toxicity to fish and birds is low, and it is non toxic to bees. The acute oral toxicity of S-methoprene and other toxicological parameters are also very favourable, with extremely low mammalian toxicity demonstrated by the fact that the World Health Organization (WHO) allows the use of S-methoprene based products for control of mosquito larvae in potable water storages.

S-methoprene has no effect on mosquitoes which have reached the pupal or adult stage prior to treatment, typically acts during 3rd and 4th larval instars of the mosquitoes' development. Since this active substance interferes with the development of the larvae, they will stay alive and develop into pupae. Treated larvae continue to develop normally to the pupal stage after which they fail to emerge and drown. Their death will mostly occur while hatching from the pupae (hatching inhibition).



The product may be used to treat smaller or larger water holding features which are not used as drinking water or for keeping (ornamental) fish, are not connected with surface water, and which may be suitable, temporarily or permanently, for the breeding of mosquito larvae.

Application doses depending on the quality of the water:

Quality of water:	Dose:
clear water	1x2 g or 4x0.5g tablet/ 1000-2000 l of water
water polluted with organic matters	1x2 g or 4x0.5g tablet/ 500-1000 l of water
high load of organic matters for example, in case of shafts	1x2 g or 4x0.5g tablet/ 40 l of water



BIOPREN®

MOSQUITO LARVICIDE TABLET



Treatable water holding features:

- gully,
- garden pond,
- fountain,
- unused pool,
- area covered with excess inland water,
- flooded area,
- water ditch,
- in urban area: rain-water drainage system
- in rural area: rain water ditch
- any other natural or man-made depression suitable to catch and hold water.



The tablet starts releasing the active ingredient when in contact with water, therefore make sure the tablet is overrun by the water. To achieve the best effect, start treatment prior to mosquito breeding. Repeat treatment once every month during the whole breeding period (from April until October).

Do not apply the tablet to waters that are connected with living water resources (e.g. creek, river, lake, etc.).

The water treated with the tablet can be used to water the soil and the yard, as well as to irrigate gardens or parks. Do not use for direct watering of plants grown for feeding (for example vegetables, spices).

Do not use in water holding features which communicate with living waters. Avoid getting to living waters.

Use exclusively for the control of mosquito larvae and in accordance with the directions for use. When applying the product, the relevant local regulations must be observed.

Store the tablet in its original packaging away from food, drink and fodder, in a dry and closed place and out of reach of the children and livestock. Do not eat or smoke during work. Avoid contact with the skin and eyes. If in eyes, rinse eyes with plenty of water for at least 15 minutes, then seek medical advice. Thoroughly wash hands in hot water and soap after work.

The expired insecticide, remains and packaging thereof may be thrown to the household garbage.

