

Monitoring the occurrence of the Indian meal moth (*Plodia interpunctella*), the cocoa moth (*Ephestia elutella*), the flour moth (*Ephestia kuehniella*) and the almond moth (*Ephestia cautella*) in flats, groceries, food stores, warehouses. The sex pheromone incorporated in the dispenser effectively attracts males of the moth for 6-8 weeks. The glue remains effective for a long period. This trap is not effective against cloth moth.

#### ACTIVE INGREDIENTS:

warehouse moth sex pheromone

#### PHYSICAL PROPERTIES, APPEARANCE:

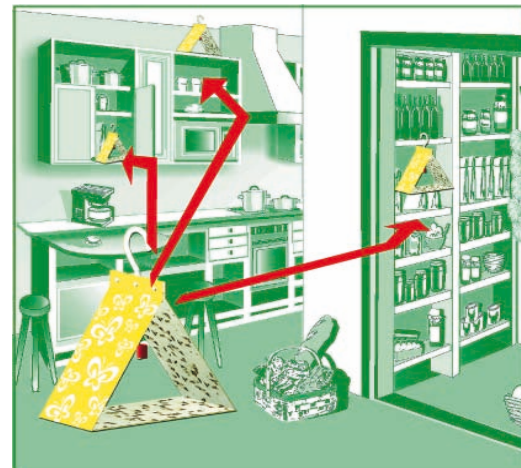
triangle shaped, glued paper cardboard with hanger, with a rubber dispenser

#### TOXICOLOGY

As this trap does not contain any toxic insecticide, it is environmentally safe.

#### USES:

It is recommended to use at least one trap per 60 m<sup>3</sup> indoor space. Effective for 6-8 weeks. In case of higher infestation, the source of infestation can be localised by simultaneous application of a few traps.



#### PRODUCT FOR PROFESSIONAL AND AMATEUR USE

EXPIRATION PERIOD:  
2 years

#### PACKING:

KS-16002



12 x 2 trap/box



60 cartons

KE-16633



180 traps



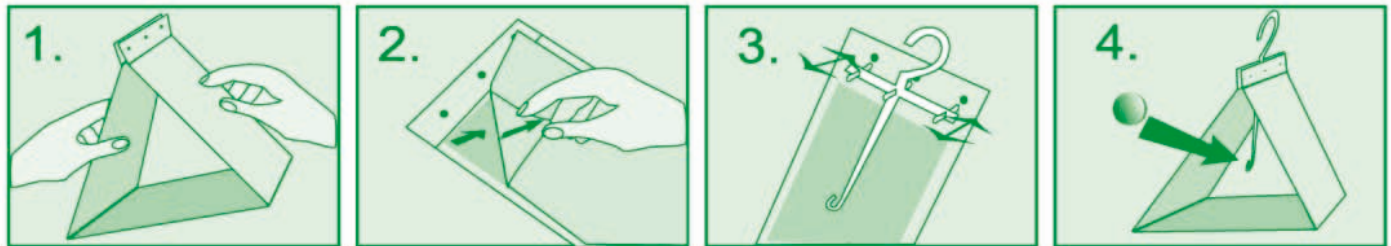
25 cartons





## DETAILS OF THE APPLICATION:

- fold the cardboard sheet to form the shape of a triangle (Fig. 1),
- remove the protecting foil from the adhesive side of trap (Fig. 2),
- place the appropriate part of the hanger into the holes on the edge of the cardboard sheet, then fold the trap to create its final shape and fix it to the other side of the hanger (Fig. 3),
- take the dispenser out of the hermetically sealed foil pouch and place it on the hanger in the middle of the trap (Fig. 4),
- hang up the trap or place it on a shelf in the infested room.



Place the trap to a dust-free area. Check at regular intervals whether the trap is full of insects, has become contaminated or is functioning longer than two months. In such a case, replace the trap with a new one. After use the trap can be thrown into the trash. It is recommended to use at least one trap per 60 m<sup>3</sup> indoor space. In case of higher infestation, the source of infestation can be localised by simultaneous application of a few traps. Foodstuff and appliances infested with moth larvae should be destroyed.

## WARNING:

The product should be applied according to the directions for use and also by keeping the general safety regulations pertaining to such products. Do not touch the sticky surface of trap by hand! Wash hands after use. Keep away from children.

## STABILITY:

It can be stored in original package in a cool, dry and dark place for 2 years.

