

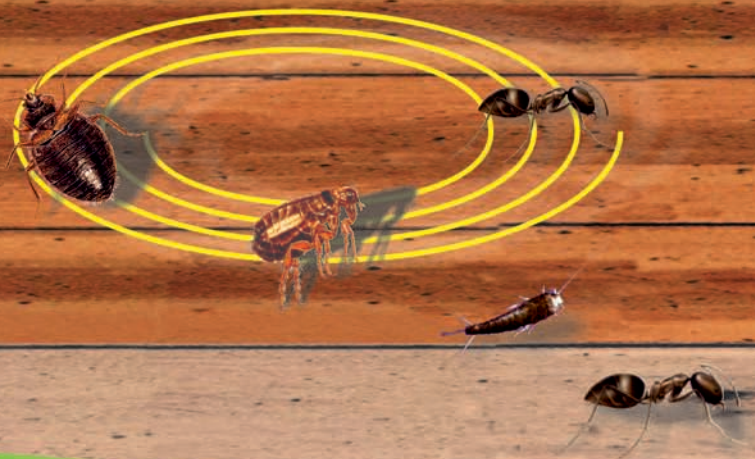
PESTSTOP® COMBI 8 CS

LIQUID MICROENCAPSULATED CAPSULE SUSPENSION



Effective for indoor control of
cockroaches, bed bugs and
other crawling insects
eg.: ants, fleas, silverfish, etc.
and also against
house flies, litter beetles, red mites
in closed spaces.

- ✓ rapid killing effect
- ✓ residual efficacy, 14-16 weeks
- ✓ effective on porous surfaces



PESTSTOP® COMBI 8 CS



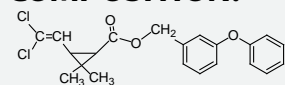
Special microencapsulated formulation providing rapid killing effect and long-lasting residuality. Kills cockroaches, bed bugs and other crawling insects eg.: ants, fleas, silverfish, etc. and also house flies in closed spaces. In poultry farms the product is suitable against litter beetle (*Alphitobius diaperinus*) and red mite (*Dermanyssus gallinae*).

The product has both rapid killing effect and long-lasting residuality of effectiveness thanks to the microencapsulated formulation. Preserves its effect for a long time due to the gradual release of the active ingredient.

ADVANTAGES:

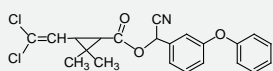
- Rapid killing effect and long-lasting residuality.
- Can be applied also on porous surfaces as the capsules stay on the surface.
- Sticks well to surfaces.

COMPOSITION:



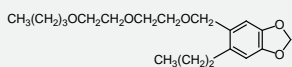
5,9 % (60 g/l) permethrin

Acts on the nervous system of insects, disturbs the function of neurons by interaction with the sodium channel.



2,6 % (27 g/l) cypermethrin

Non-systemic insecticide with contact and stomach action.



7,6 % (78 g/l) piperonyl butoxid (PBO)

Inhibits mixed function oxidases (MFO) of the insect so that its natural detoxification system is blocked and the efficacy of applied insecticides is increased.

PHYSICAL PROPERTIES:

APPEARANCE: offwhite viscous liquid
ODOUR: light petroleum smell
SOLUBILITY: miscible in water
DENSITY: 1,04 kg/lit at 20 °C

SHELF-LIFE AND STORAGE: it can be stored for 2 years in the original, sealed packaging at a temperature over + 5 °C, in a dry, cool place. Frost hazard!

**PRODUCT FOR
PROFESSIONAL USE**

**EXPIRATION PERIOD:
2 years**

PACKING:

KS-22132



12 x 1 litre



32 cartons



PESTSTOP® COMBI 8 CS



INSTRUCTIONS FOR USE

Before preparing the working solution shake the preparation well in the plastic bottle, then close it immediately after pouring out the concentrate.

Fill up half the spraying device with water. Measure out the quantity of PESTSTOP® Combi 8 CS concentrate as specified below and dilute it with 2-3 times as much water in a mixing bowl. Pour the premixture thus prepared into the sprayer. After fill the sprayer up to the desired volume, and mix the solution well.

The working solution prepared must be shaken well or stirred before use and must be used on the same day.

During treatment the concentrate might leave a whitish stain, therefore it is recommended to do a trial treatment.

Against crawling insects, cockroaches (German cockroaches and oriental cockroaches) bed bugs:

In case of strong infestations:

use 160 ml PESTSTOP® Combi 8 CS concentrate for the preparation of 5 litres of working solution. 5 litres of working solution is suitable for treating a surface of 100 m².

In case of weak infestations:

use 125 ml PESTSTOP® Combi 8 CS concentrate for the preparation of 5 litres of working solution. 5 litres of working solution is generally suitable for treating a surface of 100m².

Efficacy: 12-16 weeks

Spray the hiding places of the insects and their transit routes.

Against flying insects: Dilute 65 ml concentrate with 5 l water and apply by the standards. Efficacy: 12-16 weeks pending on environment.

Against litter beetle (Alphitobius diaperinus) for poultry farms: After removal of poultry when premises have been emptied, manure have been removed and after a thorough cleaning, spray the walls, floor and ceiling with Peststop® Combi 8 CS microencapsulated insecticide concentrate. If insects are found outside the treatment of the building's exterior walls may be necessary.

5 litres of working solution is generally suitable for the treatment of 100 m² surface.

Residuality is up to 6 – 12 weeks.

Spray the hiding places and location of insects or their migration paths.



PESTSTOP® COMBI 8 CS



Against red mite (*Dermanyssus gallinae*) for poultry farms:

For the use of pre-empted, cleaned poultry house against red mites. Spray Peststop® Combi 8 CS microencapsulated insecticide concentrate with low-pressure hand-held or backpack spraying device on surfaces.

5 liters of working solution is generally suitable for the treatment of 150 m² surface. Residuality is up to 6 weeks.

To reach hidden red mites, spray the walls, poultry cages and perches and carefully treat cracks and crevices too .

In the poultry farm during the treatment, livestock should not be in the premises. The reintroduction of livestock is possible only after drying of treatment material and adequate ventilation. The control can only be performed by qualified personnel.

Dosage:

target organism	working solution	to be treated surface	residuality
crawling insects (cockroaches, bed bugs)	weak infestation: 125 ml PESTSTOP® Combi 8 CS concentrate up to 5 litres	100-150 m ²	12-16 weeks
	strong infestation: 160 ml PESTSTOP® Combi 8 CS concentrate up to 5 litres	100 m ²	12-16 weeks
flying insects (flies)	65 ml PESTSTOP® Combi 8 CS concentrate up to 5 litres	100 m ²	3-4 weeks
litter beetle (<i>Alphitobius diaperinus</i>)	strong infestation: 160 ml PESTSTOP® Combi 8 CS concentrate up to 5 litres	100 m ²	6-12 weeks
red mite (<i>Dermanyssus gallinae</i>)	strong infestation: 125 ml PESTSTOP® Combi 8 CS concentrate up to 5 litres	150 m ²	6 weeks

Use insecticides safely. Always read the label and product information before use.

